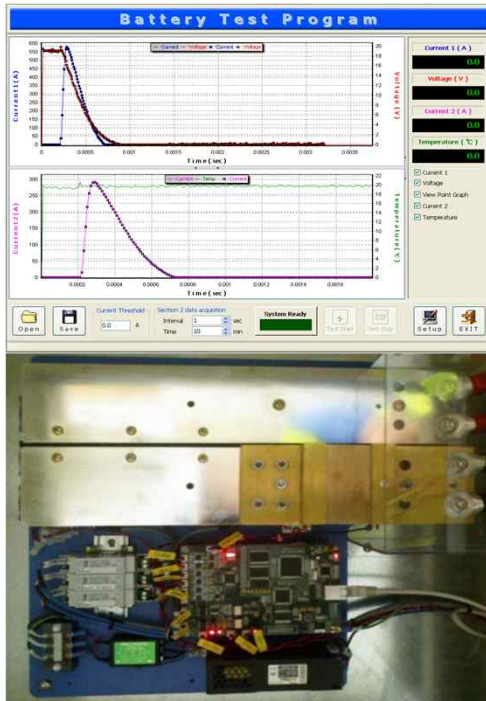


# Battery Short Tester



## ● Specification

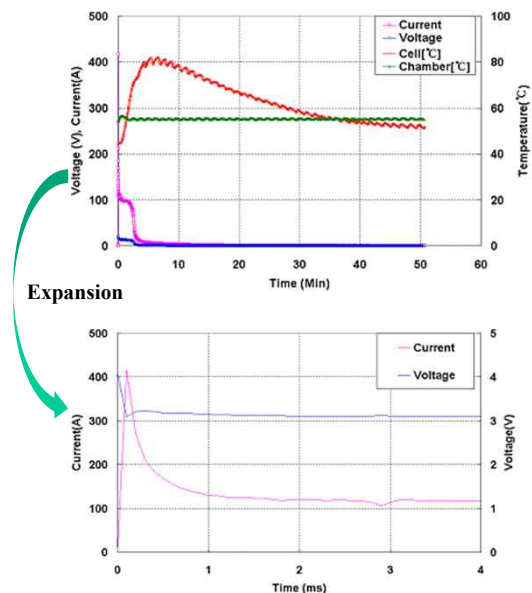
- OS : Windows XP, Windows 7, Windows 8
- Operating Power : 220V AC / 60Hz
- Communication : Ethernet TCP/IP
- Measurement Voltage : 5V ~ 1,500V DC
- Measurement Current : 100A ~ 50,000A DC
- Measurement Temperature : 0 ~ 1,000 °C, Max 32Ch
- Contact Switch : Mechanical Switch, Electronic Switch, Vacuum Switch
- Contact Resistor : 1 ~ 5 mΩ
- Measurement Section :
  - Section 1 : 0 ~ 3ms, 200kHz SPS
  - Section 2 : 10ms ~ 10Sec, 100Hz SPS
  - Section 3 : User Define
- Multi Range & Multi Channel Switch
- Operating Temperature : 0 ~ 20 °C
- Self Test Function
- Data backup Function

## ● Application

- Secondary Cell Short Test : NiCd, NiMH, Li-ion, Li-ion Polymer, etc
- Storage Battery Short Test
- Super Capacitor Short Test

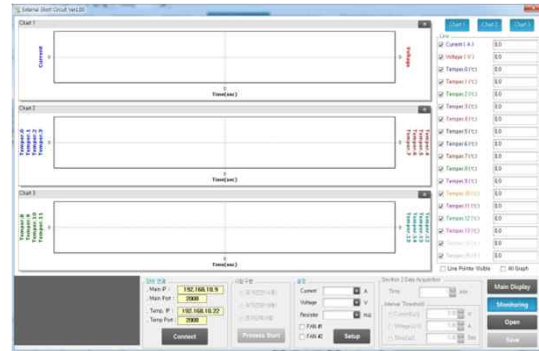
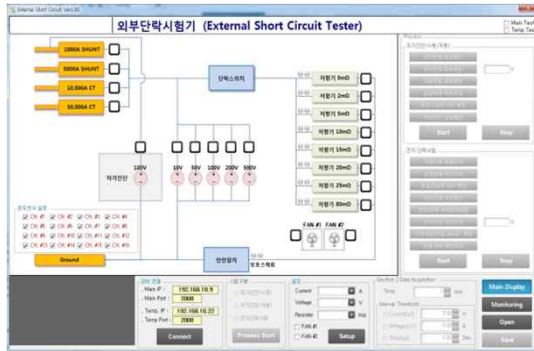
## ● Character

- High Speed Measurement :
  - Detail Peak Current & Voltage Measurement
- Measurement Section :
  - Measurement Data Regulation
- Mechanical S/W :
  - Easy Control S/W & Low Cost
- Electronic S/W :
  - Low Contact Noise & Long Life
- Vacuum S/W :
  - High Voltage & Current Contact



# Battery Short Tester

## ● Operating Program



- OS : Windows XP, Windows 7, Windows 8
- Data Storage Format : Excel, Bin
- Graph Display, Zoom In, Zoom Out
- Graph User Interface

## ● Short Tester Type



➤ Electronic Short Tester



➤ Mechanical Short Tester



➤ Multi Range Electronic Short Tester



➤ Multi Channel Mechanical Short Tester